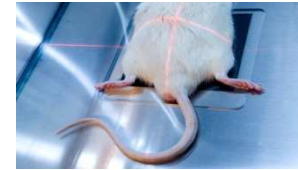


STUDY TITLE :

BONE METASTASES FROM BREAST CANCER EXPERIMENTAL MODEL



Protocol study



Animals:

Mice

Age:

5 weeks old (upon delivery)

Sex :

Female

Strain :

Balb-C/Nude

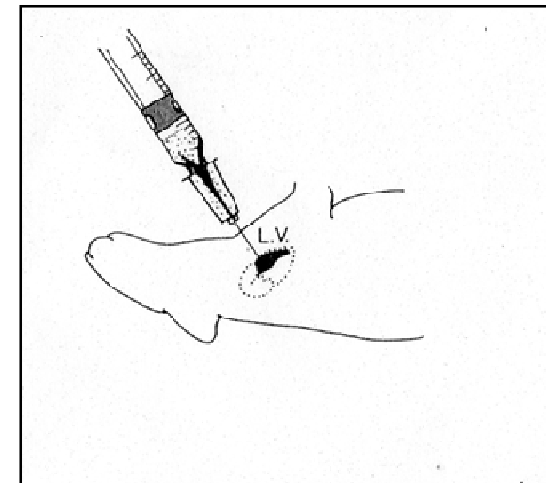
Suppliers :

Charles River Laboratories



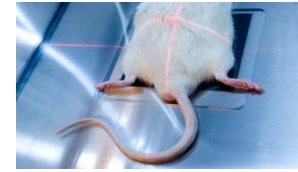
Induction of the pathology:

- ✓ Intra-cardiac injection of human mammary carcinoma cells (MDA-MB 231) in the left ventricle of immunodeficient mice.
- ✓ The development of metastases is intra-osseous
- ✓ Bone lesions are visible by radiography approximately 3 weeks after cell injection





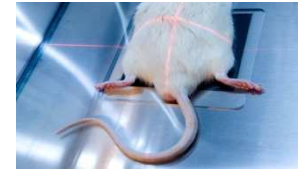
Treatment



- ✓ Any administration route
- ✓ Treatment to be defined with the sponsor (start and frequency)



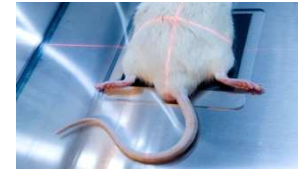
Clinical follow-up



- ✓ Weight evolution
- ✓ General clinical state
- ✓ Detailed clinical examinations
- ✓ Reactions after cell injection and reaction to compound administration



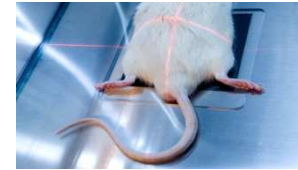
Biological following



- ✓ ELISA assays on serum bone makers on 96 well plates in duplicate
- ✓ Serum markers of bone resorption measurement : CTX, TRAP 5b,...



Radiological follow-up



✓ Kinetic of radiographical analyses

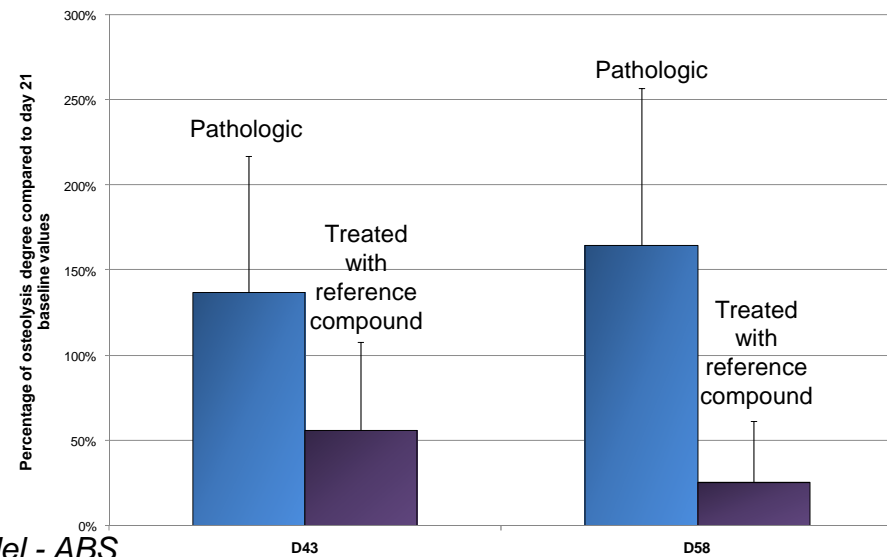


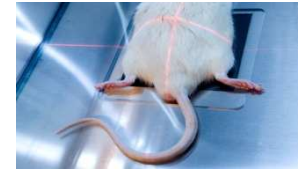
Scoring	Degree of osteolysis
0	No osteolysis visible
1	Low
2	Medium
3	High
4	Strong

✓ Scoring of radiographs:



Bone metastases from breast cancer experimental model - ABS



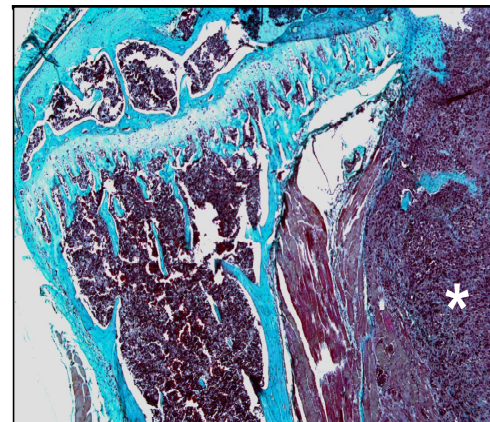


- ✓ Animals euthanasia at the end of the study
- ✓ Histological studies performed on the right posterior leg of each animal
- ✓ Per mouse: Femora embedded in resin and tibiae in paraffin after decalcification :

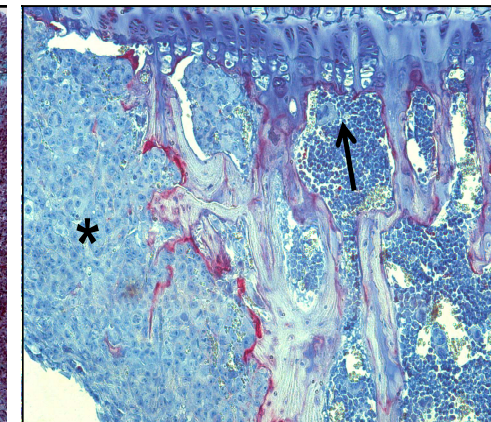
→ Stainings proposed:

- Von Kossa staining / RESIN
- Goldner's Trichrome staining/ RESIN
- TRAP staining / PARAFFIN
- Masson's Trichrome staining/ PARAFFIN
- Hematoxilin / Eosin / PARAFFIN

Other stainings are available



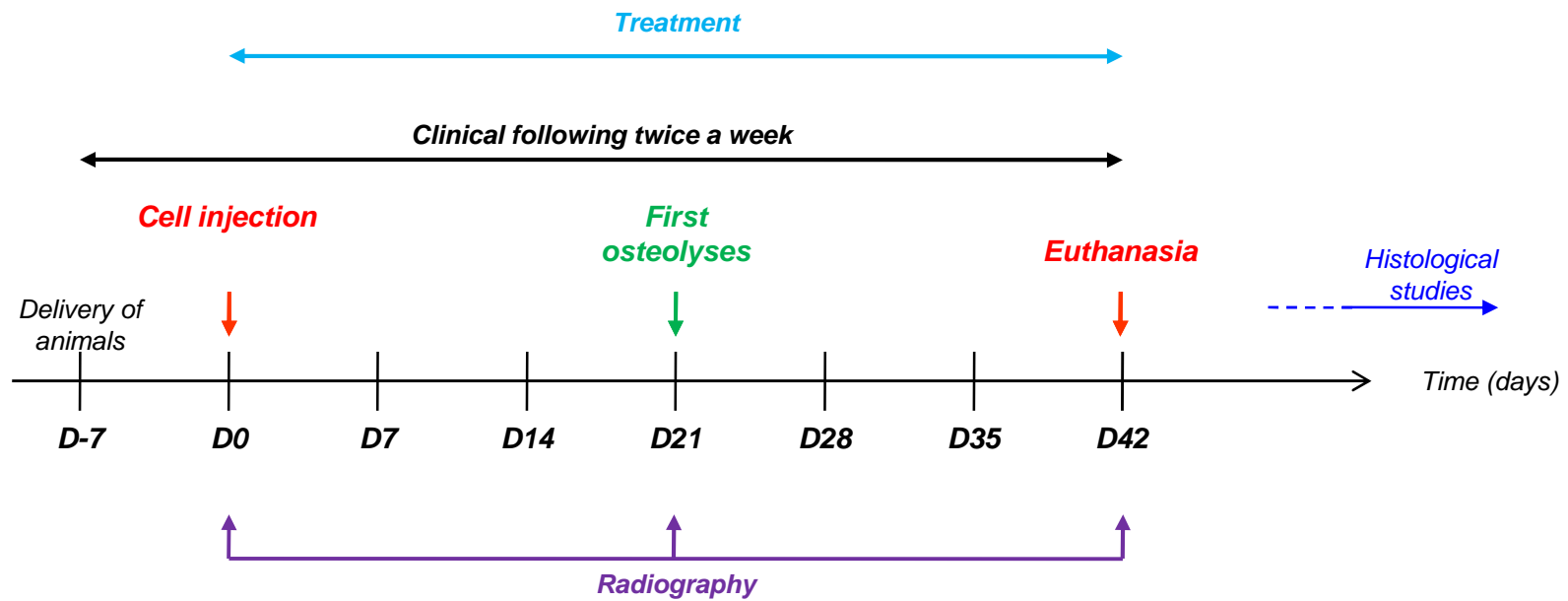
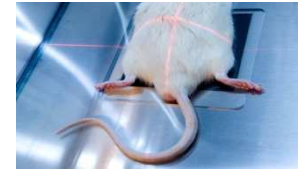
Tumor burden (white star)



Tumor burden (black star)
Osteoclast (black arrow)



Synopsis





Ronan LE BOT – CEO

ronan.lebot@atlantic-bone-screen.com

Florence DAUBINE, PhD – Project Manager

florence.daubine@atlantic-bone-screen.com

Fabien PETIT – Project Manager

fabien.petit@atlantic-bone-screen.com

Elisabeth PORCHER – Business Development Manager

elisabeth.porcher@atlantic-bone-screen.com

ATLANTIC BONE SCREEN SAS

1, rue Gaston Veil

44000 Nantes

France

www.atlantic-bone-screen.com

Tel : +33(0)2 40 41 11 25

Fax : + 33(0)2 40 41 28 35

Contact us...

... And we will send you a tailor-made protocol study