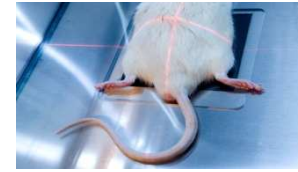


STUDY TITLE :

SWARM RAT CHONDROSARCOMA MODEL



Protocol study



Animals:

Rats

Age :

5 weeks old (upon delivery)

Sex :

Male

Strain :

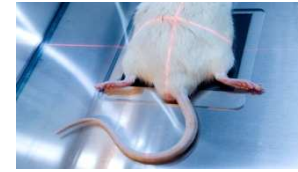
Sprague Dawley OFA

Supplier :

Charles River Laboratories



Experimental model

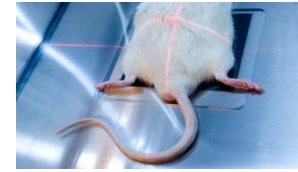


Induction of the pathology

- ✓ Removal of the rat donor tumor
- ✓ Implantation of a 2x2x2 cm fragment in the paratibial muscle
- ✓ Development of a tumor for 100% of animals
- ✓ The tumor is not very vascular
- ✓ No or not many pulmonary metastases
- ✓ Profuse cartilage matrix
- ✓ Ectopic bone formation



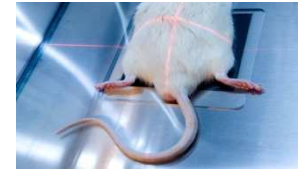
Treatment



- ✓ Any administration route
- ✓ Treatment to be defined with the sponsor (start and frequency)

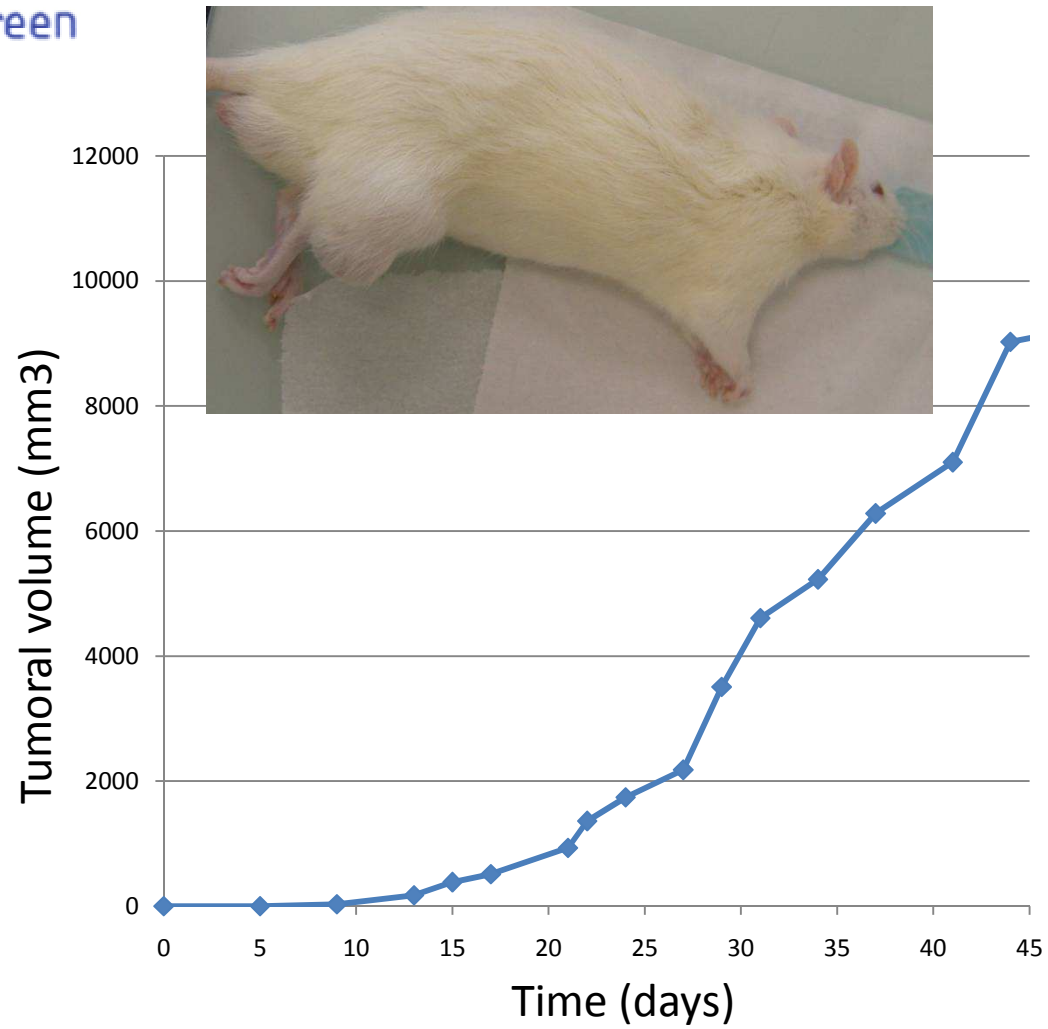
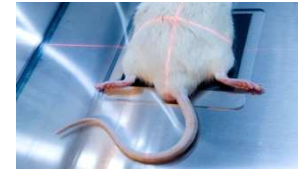


Clinical follow-up



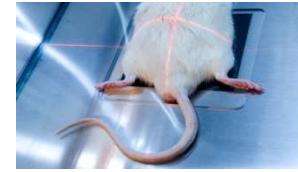
- ✓ Weight evolution
- ✓ General clinical state
- ✓ Detailed clinical examinations
- ✓ Reactions after surgery and reaction to compound administration
- ✓ Tumor volume

Tumoral growth





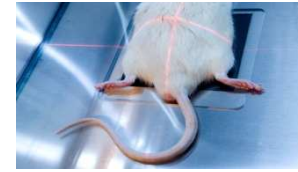
Biological follow-up



- ✓ ELISA assays on serum bone makers on 96 well plates in duplicate
- ✓ Serum markers of bone formation measurement : PAL, OCN,...



Radiological follow-up

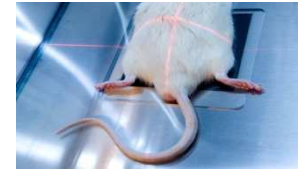


- ✓ Kinetic of radiographical analyses



- ✓ Pictures allowing the abnormal bone formation detection

Histological analyses



- ✓ Animals euthanized at the end of the study
- ✓ Histological analyses performed on tibiae
- ✓ For each rat, embedding of tibiae in paraffin after decalcification:

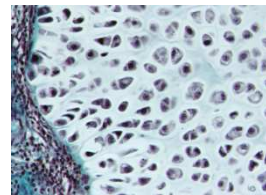
→Stainings proposed:

- Masson's Trichrome staining
- Alcian blue staining

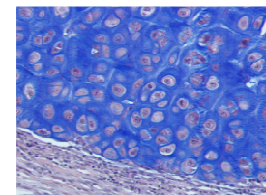
→Immunomarquage

- Ki67

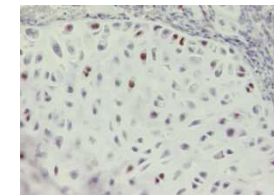
N.B: Other stainings are available



*Massons'
Trichrome*



Alcian blue



Ki67



Ronan LE BOT – CEO

ronan.lebot@atlantic-bone-screen.com

Florence DAUBINE, PhD – Project Manager

florence.daubine@atlantic-bone-screen.com

Fabien PETIT – Project Manager

fabien.petit@atlantic-bone-screen.com

Elisabeth PORCHER – Business Development Manager

elisabeth.porcher@atlantic-bone-screen.com

ATLANTIC BONE SCREEN SAS

1, rue Gaston Veil

44000 Nantes

France

www.atlantic-bone-screen.com

Tel : +33(0)2 40 41 11 25

Fax : + 33(0)2 40 41 28 35

Contact us...

... And we will send you a tailor-made protocol study