



## MICE EXPERIMENTAL MODEL OF OBESITY



## Protocol study



**Animals:**

Mice

**Sex :**

Female

**Strain :**

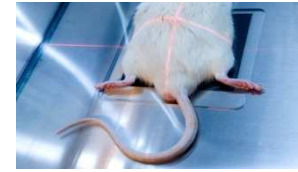
C57Bl/6 ob/ob

**Supplier :**

Charles River Laboratories



## Experimental model

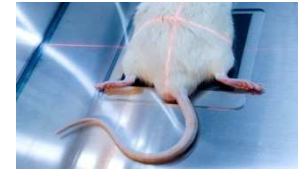


### **Induction of the pathology:**

- Black obese mice are obtained after spontaneous mutation in the leptine gene.
- Mice are received from Charles River Laboratories with already induced obesity.

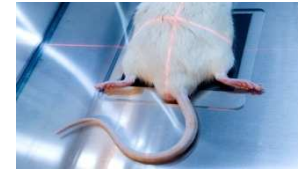


## Treatment



- Administration with syringe feeding
- Treatment to be defined with the sponsor
  - ✓ beginning of the treatment
  - ✓ frequency of the treatment

## Feeding



- Mice are fed with specific food for C57Bl/6 ob/ob mice  
→ 5K20 which contained a minimum of 10% fat
- The quantity of food and water fed by mice is measured every day.

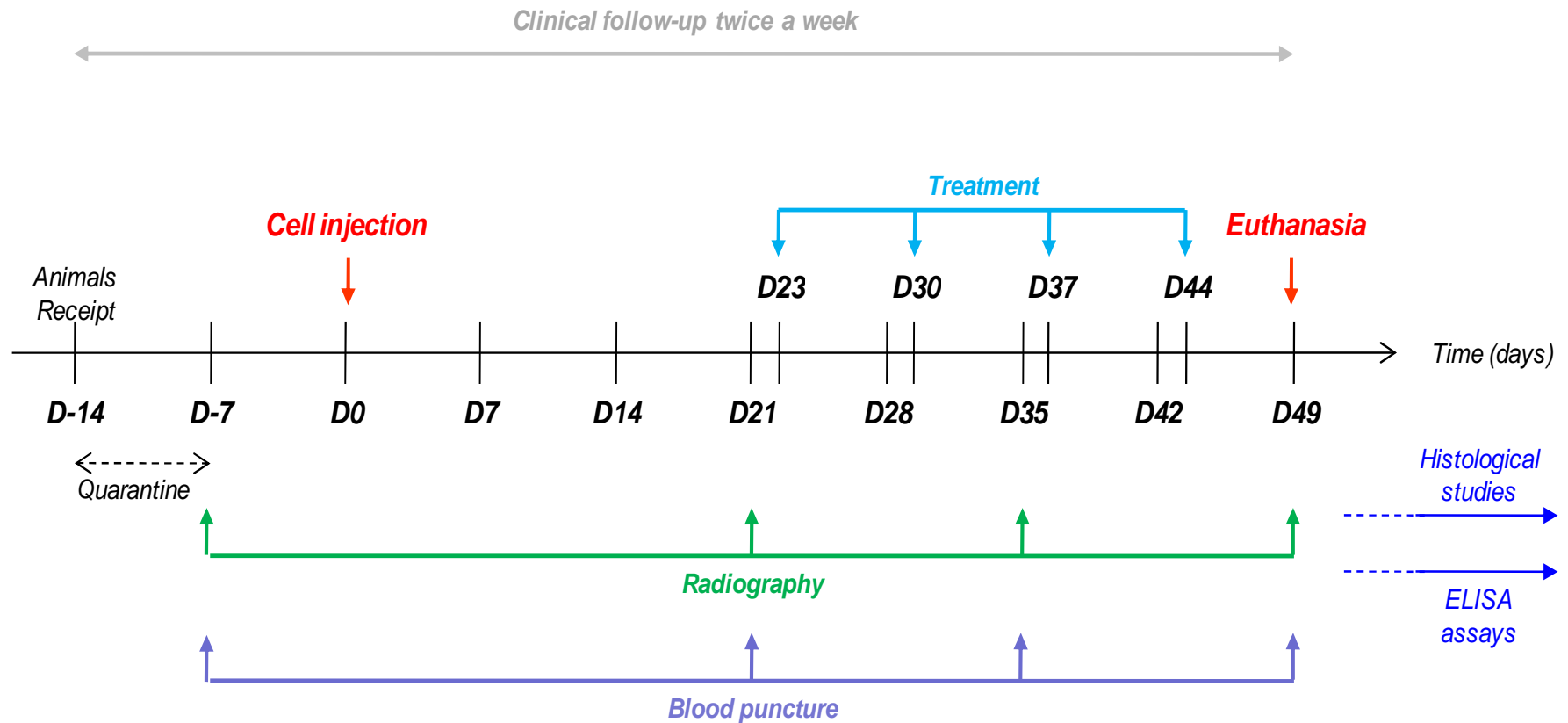
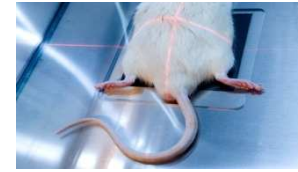


## Clinical follow-up



- Weight evolution
- General clinical state of the animal
- Detailed physical examinations

Synopsis (example)





**Ronan LE BOT – CEO**

[ronan.lebot@atlantic-bone-screen.com](mailto:ronan.lebot@atlantic-bone-screen.com)

**Florence DAUBINE, PhD – Project Manager**

[florence.daubine@atlantic-bone-screen.com](mailto:florence.daubine@atlantic-bone-screen.com)

**Fabien PETIT – Project Manager**

[fabien.petit@atlantic-bone-screen.com](mailto:fabien.petit@atlantic-bone-screen.com)

**Elisabeth PORCHER – Head of Customers**

[elisabeth.porcher@atlantic-bone-screen.com](mailto:elisabeth.porcher@atlantic-bone-screen.com)

**CONTACT US**

**ATLANTIC BONE SCREEN SAS**

**1, rue Gaston Veil**

**44000 Nantes**

**France**

**www.atlantic-bone-screen.com**

**Tel : +33(0)2 40 41 11 25**

**Fax : + 33(0)2 40 41 28 35**

**Our team stays at your full disposal for any price quotation request!**