

AtlanChim  
Pharma



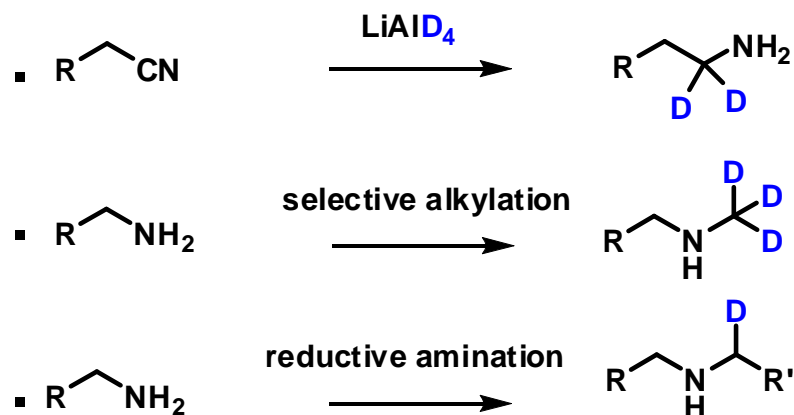
**YOUR RESEARCH PARTNER**



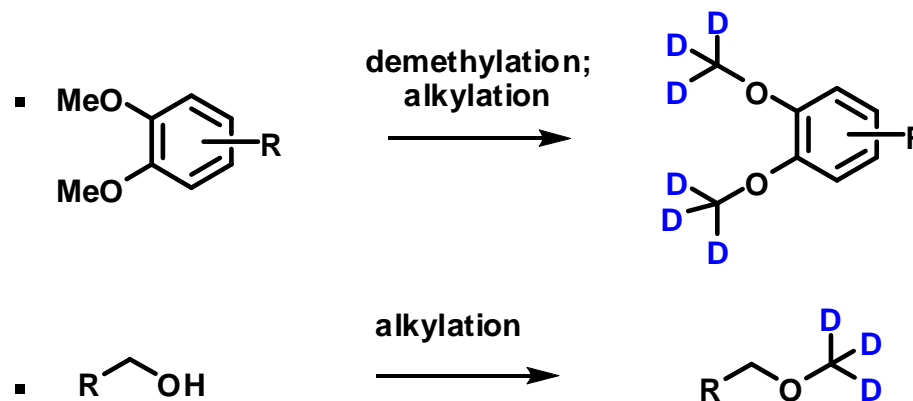
# Representative reactions

## • D Labeled compounds:

### • Amines:



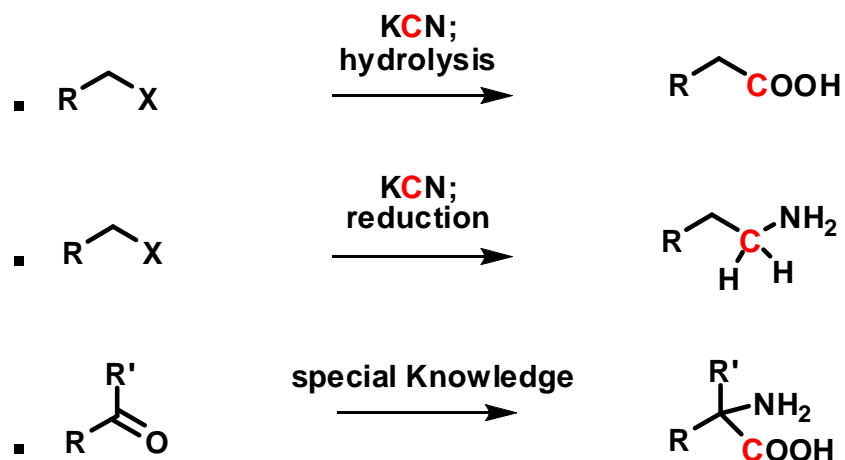
### • Phenols and alcohols:



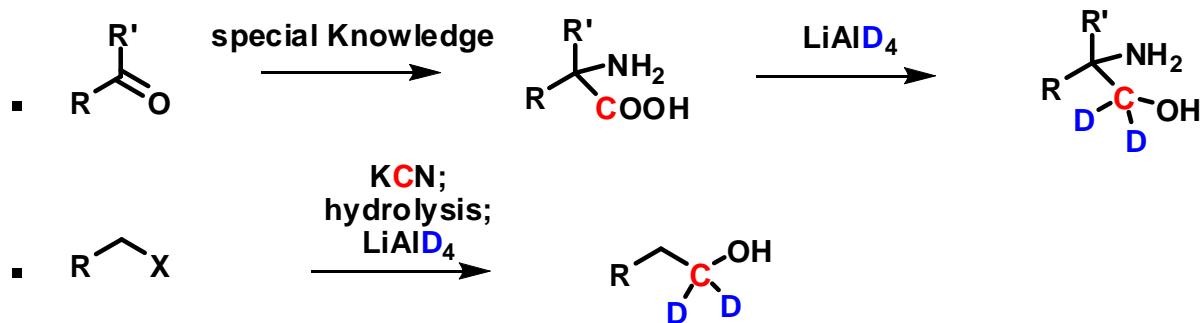


# Representative reactions

## • <sup>13</sup>C Labeled compounds:



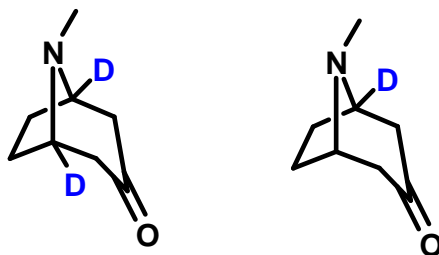
## • <sup>13</sup>C, D<sub>2</sub> Labeled compounds:



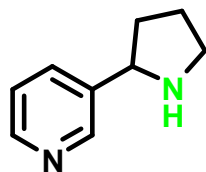
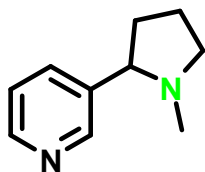


# Scientific Directors knowledge

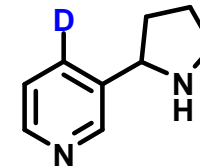
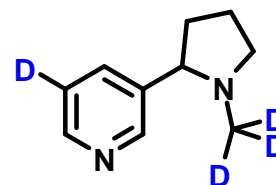
## ✿ Examples of labeled compounds published (D, <sup>15</sup>N):



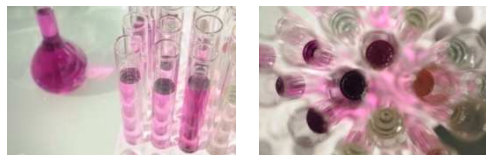
*Eur. J. Org. Chem.* **2010**, 152–156



*J. Label. Compd. Radiopharm.* **2001**, 44, 881–888



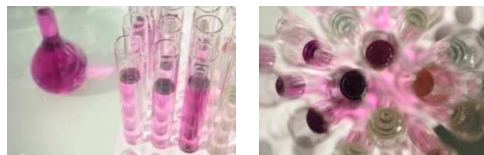
*J. Label. Compd. Radiopharm.* **2009**, 52, 117–122



## *In house experiences*

### ✿ Representative syntheses:

- 1 g,  $^{13}\text{C}_4$ , 9 steps
- 4.5 g,  $\text{D}_{11}$ , 7 steps
- 4.5 g,  $^{13}\text{C}_2$ , 6 steps
- 1.4 g,  $^{13}\text{C}$ ,  $\text{D}_2$ , 5 steps



## Contact us

Ronan LE BOT – CEO

[ronan.lebot@atlanchimpharma.com](mailto:ronan.lebot@atlanchimpharma.com)

Elisabeth PORCHER – Business Development Manager

[elisabeth.porcher@atlanchimpharma.com](mailto:elisabeth.porcher@atlanchimpharma.com)

Nolwenn DAUBIN – Business Development

[nolwenn.daubin@atlanchimpharma.com](mailto:nolwenn.daubin@atlanchimpharma.com)

[www.atlanchimpharma.com](http://www.atlanchimpharma.com)

### AtlanChim Pharma (HEADQUARTERS)

1 rue Gaston Veil  
44035 NANTES cedex 1 – FRANCE

Tel : + 33 (0)2 40 41 11 25

Fax : + 33 (0)2 40 41 28 35

GSM : + 33 (0)6 19 05 27 08

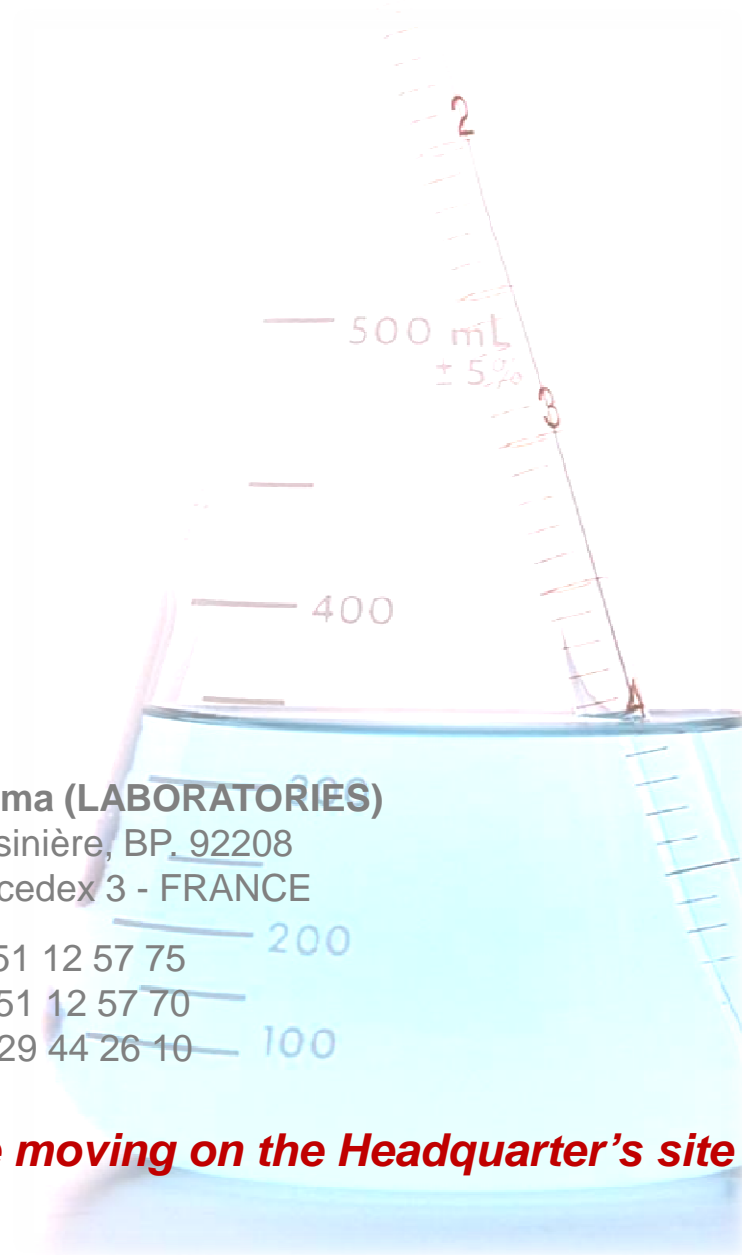
### AtlanChim Pharma (LABORATORIES)

2 rue de la Houssinière, BP. 92208  
44322 NANTES cedex 3 - FRANCE

Tel : + 33 (0)2 51 12 57 75

Fax : + 33 (0)2 51 12 57 70

GSM : + 33 (0)6 29 44 26 10



**Attention : from April 2010, 6<sup>th</sup> the laboratories are moving on the Headquarter's site !**