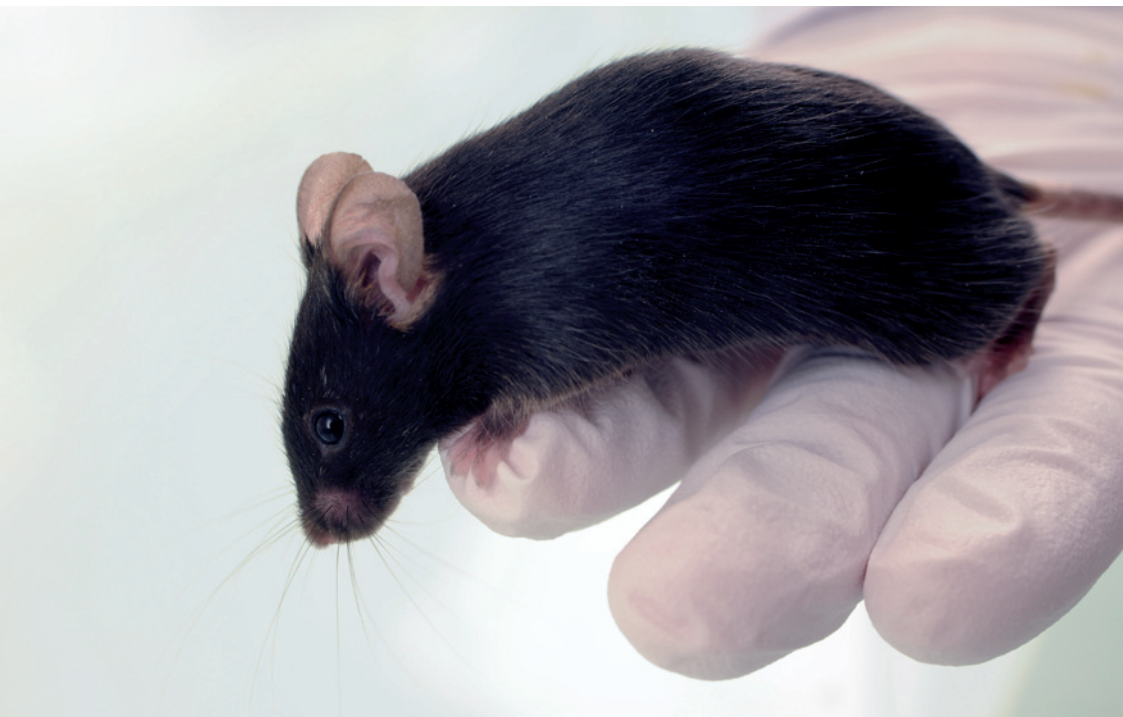


In Vivo



Reliable animal models
reproducing human bone
pathologies





In Vivo

RELIABLE ANIMAL MODELS



Our vision : constant innovative services and new specific preclinical models for your projects

Identification and characterization of the therapeutic effect of your compounds.

APPLICATIONS FOR HEALTH CARE, FOOD AND COSMETIC INDUSTRIES

Drug candidates, nutraceuticals, biomaterials, formulations and more.

RELIABLE ANIMAL MODELS (RAT, MICE, RABBIT) REPRODUCING HUMAN BONE PATHOLOGIES

- Osteoporosis
- Osteoarthritis
- Rheumatoid arthritis
- Osteosarcoma
- Pulmonary metastasis
- Chondrosarcoma
- Bone metastasis
- Custom-made animal models
- And more

FOLLOW-UP AND END-POINTS

CLINICAL PARAMETERS

- **Animal survival**, reaction to treatment.
- **Health status**, weight evolution, walking difficulties.
- **Tumor volume** measurement.

BIOLOGICAL PARAMETERS

- **Bone resorption** : C-telopeptide, deoxypyridinoline
- **Bone formation** : Osteocalcin, alkaline phosphatase
- **Calcium metabolism** : Ca^{2+} , Vitamin D3, PTH
- **Growth** : IGF-1, Growth hormone
- **Prostate cancer development** : PSA
- **And more**

HISTOLOGY AND IMAGERY
